

NEW



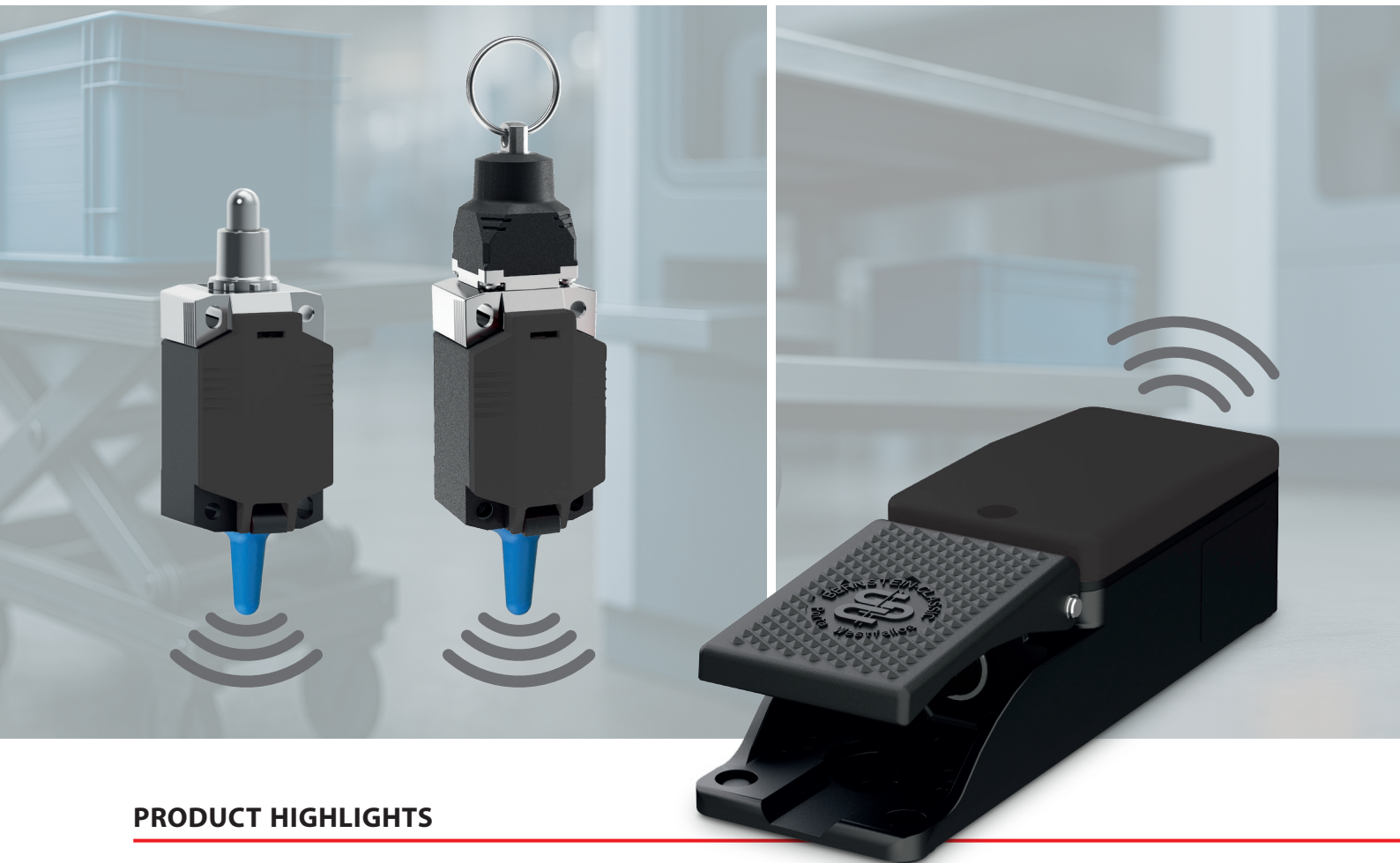
Cordless. Flexible. Reliable.

Wireless switching devices for modern industrial processes

Our proven BERNSTEIN switches are now also available as wireless versions – for applications that require high flexibility combined with clearly defined switching processes.

Energy-efficient wireless transmission enables ranges of up to 80 metres outdoors and approximately 30 metres in industrial environments, ensuring robust, reliable signal transmission.

The combination of mechanically advanced switch technology and modern wireless communication creates a solution that is precise, durable and versatile in its integration.






PRODUCT HIGHLIGHTS

- **No cable** – maximum freedom of positioning
- **Quick, easy installation** and no cable breakage
- **Strong, interference-free wireless connection** even in harsh industrial environments
- **Extremely robust** – built for daily industrial use
- **Maintenance-free and no battery needed** thanks to energy harvesting

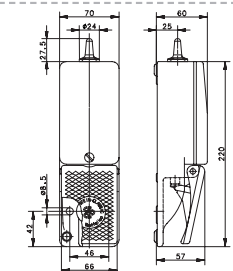
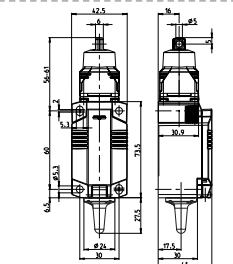
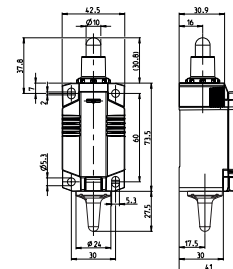


Order details wireless switching devices

Available as position, rope pull or foot switch

Picture	Designation	Article number	Frequency	Description
	IN73-868 SM	6081000139	868 MHz	Plastic switch with plunger *
	IN73-902 SM	6081000140	902 MHz	Plastic switch with plunger *
	MN78-868 SM	6087000133	868 MHz	Metal switch with plunger *
	MN78-868 SM	6087000134	902 MHz	Metal switch with plunger *
	IN73-868 RP	6081000143	868 MHz	Plastic switch with pull switch attachment
	IN73-902 RP	6081000144	902 MHz	Plastic switch with pull switch attachment
	F1-868	6061500582	868 MHz	1-pedal
	F1-868 UN	6061000583	868 MHz	1-pedal, with protective shroud
	F1-902	6061500584	902 MHz	1-pedal
	F1-902 UN	6061000585	902 MHz	1-pedal, with protective shroud

* Variants with other actuators available on request.



Accessories

Designation	Article number	Description
WR-868	6079100008	Wireless receiver 868 MHz
WR-902	6079100009	Wireless receiver 902 MHz
RA1-868	6079100004	Rod antenna 868 MHz
RA2-868	6079100005	Flexible antenna 868 MHz, panel mounting
RA1-902	6079100006	Rod antenna 902 MHz
RA2-902	6079100007	Flexible antenna 902 MHz, panel mounting

Technical data wireless receiver

- **Rated operating voltage (U_e):** 24 V DC
- **Switching function:** Monostable / Bistable
- **Relay outputs:** 4 (independent of each other)
- Up to 28 different wireless switching devices can be programmed for simultaneous use per relay output



Wireless receiver
WR-868 / WR-902



Rod antenna
RA1-868 / RA1-902



Flexible antenna
RA2-868 / RA2-902