



The Suspension system CS-480 B.flex

BERNSTEIN'S smallest connection solution for encapsulated IPCs and control enclosures

From square to round

From light suspension system to the heavy-duty suspension system

Small but powerful

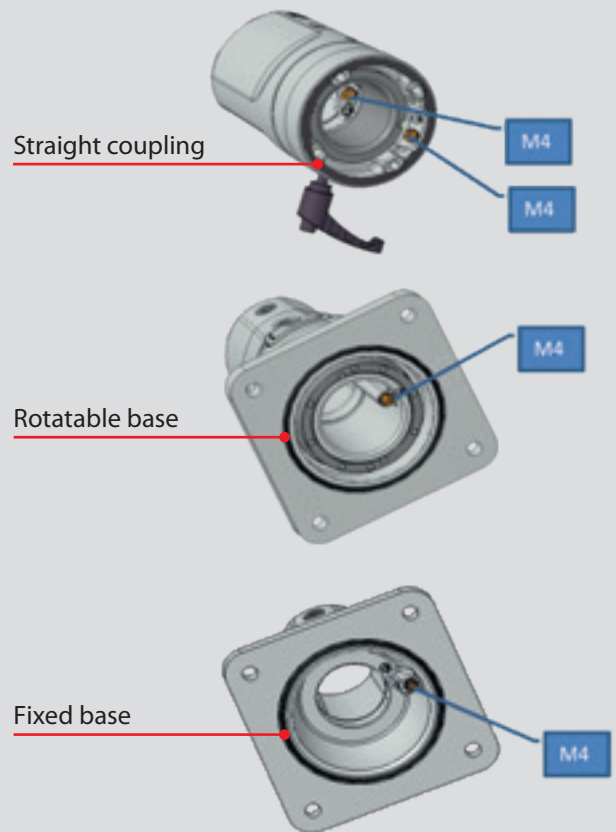
The CS-480 B.flex is the smallest suspension system from BERNSTEIN. The 48mm tube system is ideal for the connection of encapsulated IPCs or control enclosures to machines and automation systems. It delivers individual flexibility for Control enclosures or encapsulated IPCs, that are mounted on ceiling, wall or floors. Users frequently need simpler, quick and more ergonomic positioning to suit their own individual needs. CS-480 B.flex suspension system from BERNSTEIN AG easily meets this challenge, however not only simple and cost-effective solutions can be realised, also complex requirements can be easily and quickly implemented when used in conjunction with our popular and proven "Allrounder", suspension system CS-3000. The reduction elbow functions as a connection and transition from a round to a square tube. The rotatable elbow also allows connection to our popular CS-3000neXt.

Fixed motion sequences, uniform workstations and rigid control elements, which traditional were forced upon employees, are rapidly becoming a thing of the past. BERNSTEIN are actively seeking ergonomic design solutions to preserve the health of operators and improve efficiencies. There is a direct effect on the profitability of a company, productivity is increased, the error rates are minimised, and sickness-related down-time reduced.

Connection possibilities

- Control enclosures with support surface of at least 81 mm
- Encapsulated IPCs with fixed 48 mm round tube connection
- Encapsulated IPCs with rotatable 48 mm round tube connection

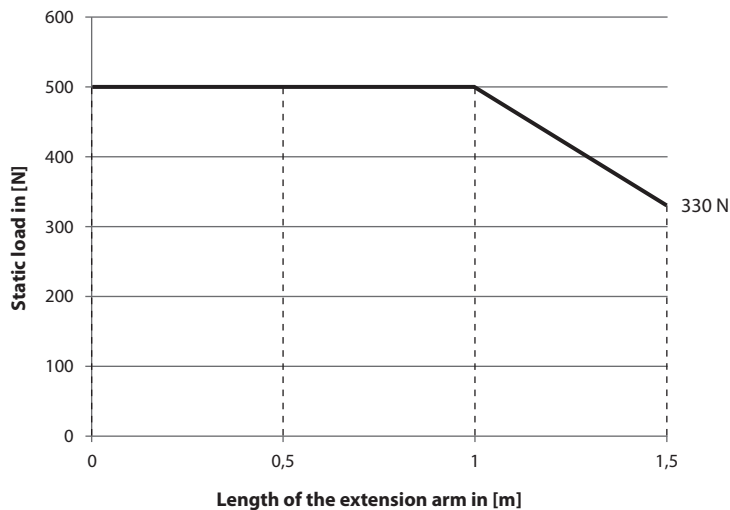
Flexible system components



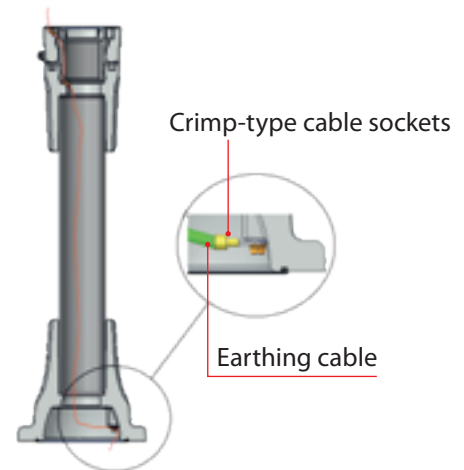
Example presentations



Load diagram for static load capacity CS-480 B.fleX



Earthing example



The system components from BERNSTEIN are characterised by internal equipotential bonding and a separate protective conductor. The separate protective conductor connection sets us apart from our competitors.

Individually ergonomical. Flexible and fast.

Product advantages

- Simplest and most cost-effective solution for hanging and free-standing operator stations
- Quick and easy ergonomic adjustment
- Continuous equipotential bonding
- Maximum cable diameter: Ø 40 mm
- Flexible and cost-effective connection from round to square tube
- Easy to retrofit – complete exchange of the existing suspension system is not necessary
- Temperature range –5 °C to +70 °C
- Suspension system conforms to protection class IP65 according to IEC 60529


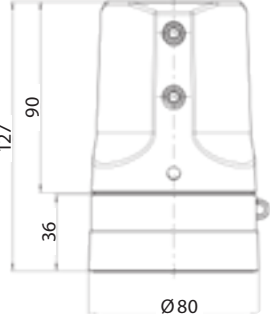

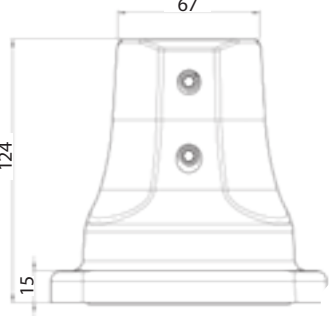

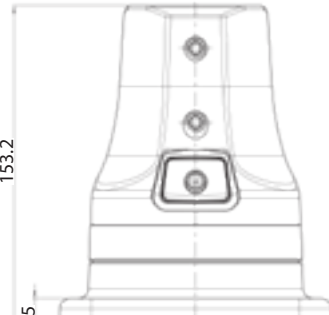

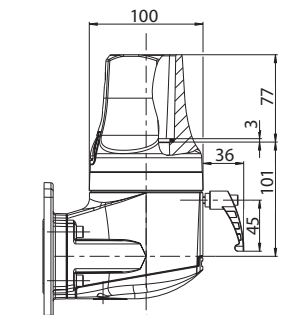

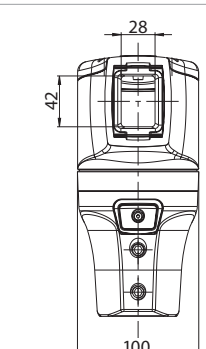


With further variable suspension systems, operating elements and flexible expansion possibilities, BERNSTEIN offers the matching solution for every industrial work place.

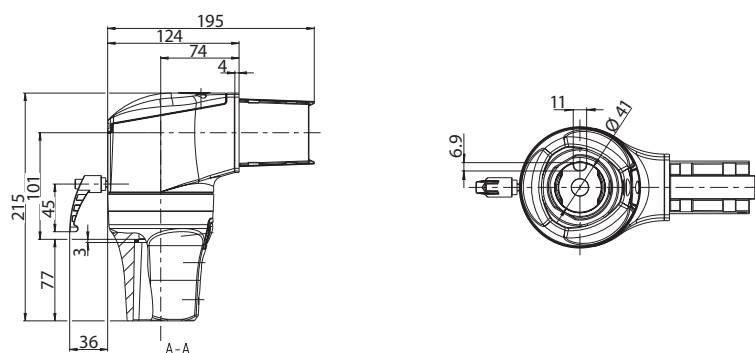
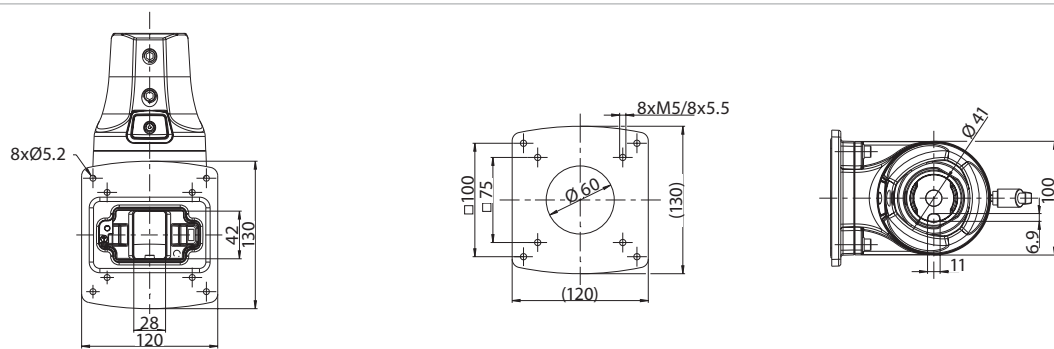
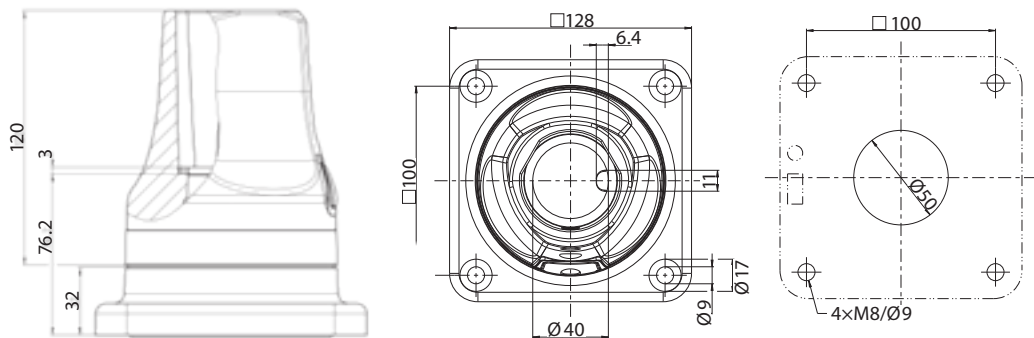
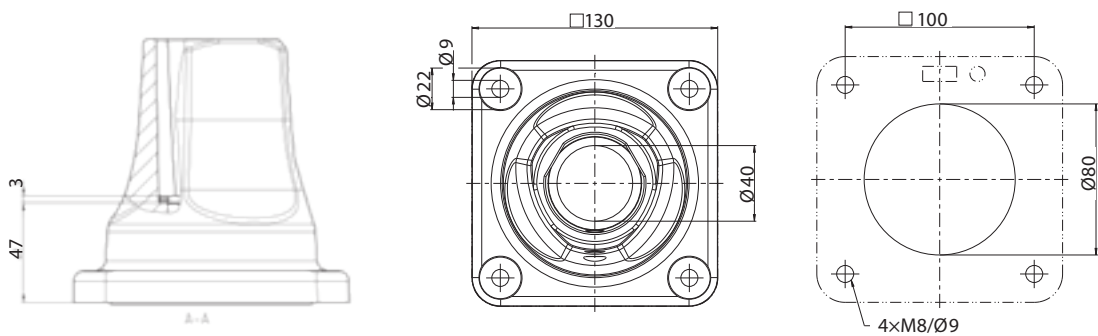
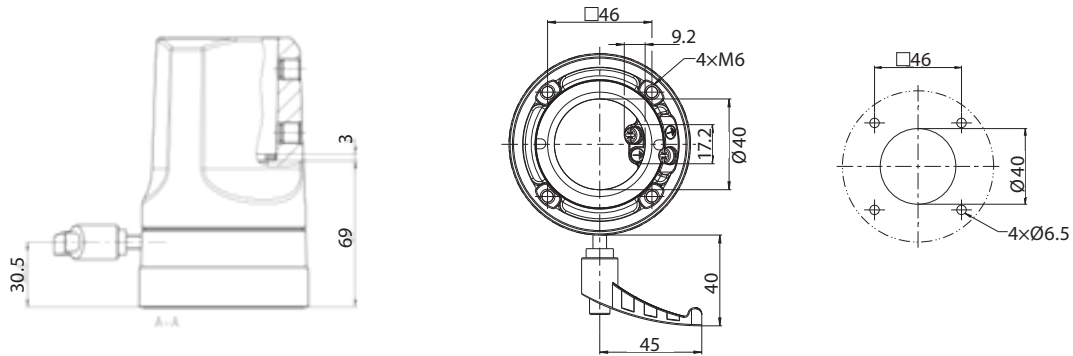
Standing, turning, angling, tilting or hanging: BERNSTEIN offers the right solution for every customer requirement to find the right and all individual solution.

B.fleX — B.BERNSTEIN


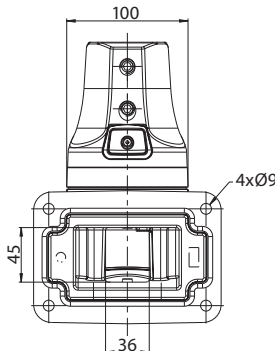

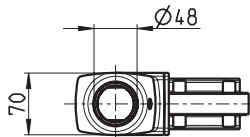

Ordering information

	Article	Dimensions in mm
	<p>Straight coupling</p> <p>1014800001 RAL 9006 white-aluminium *</p> <p>1014800015 RAL 7016 anthracite-grey</p> <ul style="list-style-type: none"> • Aluminium die-casting • Angle of rotation 300° with stop • Weight: 957 g • Connection for equipotential bonding 	
	<p>Base/ Wall flange</p> <p>1014800013 RAL 9006 white-aluminium *</p> <p>1014800027 RAL 7016 anthracite-grey</p> <ul style="list-style-type: none"> • Aluminium die-casting • Weight: 1273 g • Connection for equipotential bonding 	
	<p>Rotatable base</p> <p>1014800014 RAL 9006 white-aluminium *</p> <p>1014800028 RAL 7016 anthracite-grey</p> <ul style="list-style-type: none"> • Aluminium die-casting • Angle of rotation 300° with stop • Optional swivel angle limitation • Weight: 1917 g • Connection for equipotential bonding 	
	<p>Panel coupling S</p> <p>1014800003 RAL 9006 white-aluminium *</p> <p>1014800029 RAL 7016 anthracite-grey</p> <ul style="list-style-type: none"> • Aluminium die-casting • Angle of rotation 300° with stop • Weight: 2668 g • Connection for equipotential bonding 	
	<p>Elbow, rotary from suspension system CS-3000neXt to tube 48 mm</p> <p>1014800008 RAL 9006 white-aluminium *</p> <p>1014800022 RAL 7016 anthracite-grey</p> <ul style="list-style-type: none"> • Aluminium die-casting • Angle of rotation 300° with stop • Weight: 2457 g • Connection for equipotential bonding 	

* Die-cast aluminium components standard in RAL 9006 (white-aluminium)



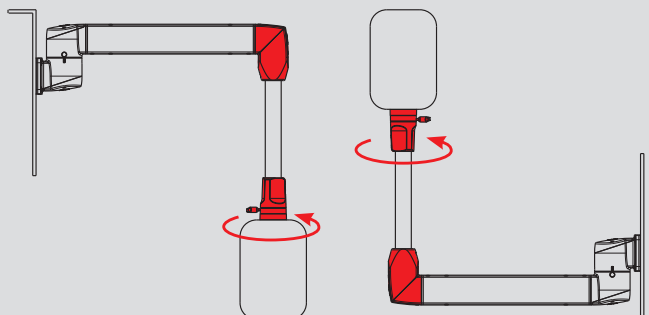
Ordering information

Article		Dimensions in mm														
	<p>Wall joint S</p> <p>1014800011 RAL 9006 white-aluminium *</p> <p>1014800025 RAL 7016 anthracite-grey</p> <ul style="list-style-type: none">• Aluminium die-casting• Angle of rotation 300° with stop• Weight: 2634 g• Connection for equipotential bonding															
	<p>Elbow, reduced from suspension system CS-3000 to tube 48 mm</p> <p>1015300197 RAL 9006 white-aluminium *</p> <p>1015300020 RAL 7016 anthracite-grey</p> <ul style="list-style-type: none">• Reducer elbow from the square tube to 48 mm round tube• Aluminium die-casting• Weight: 1920 g															
	<p>Suspension tube Ø 48 mm</p> <ul style="list-style-type: none">• Galvanised steel• Maximum cable diameter Ø 40 mm• Lengths can be selected	<table><tr><th>Article number</th><th>Length in mm</th></tr><tr><td>9521244000</td><td>250</td></tr><tr><td>9521245000</td><td>500</td></tr><tr><td>9521246000</td><td>750</td></tr><tr><td>9521247000</td><td>1000</td></tr><tr><td>9521248000</td><td>1250</td></tr><tr><td>9521249000</td><td>1500</td></tr></table>	Article number	Length in mm	9521244000	250	9521245000	500	9521246000	750	9521247000	1000	9521248000	1250	9521249000	1500
Article number	Length in mm															
9521244000	250															
9521245000	500															
9521246000	750															
9521247000	1000															
9521248000	1250															
9521249000	1500															

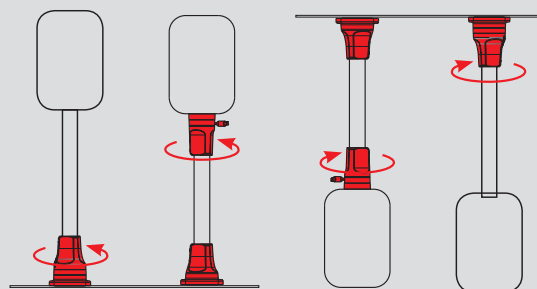
* Die-cast aluminium components standard in RAL 9006 (white-aluminium)

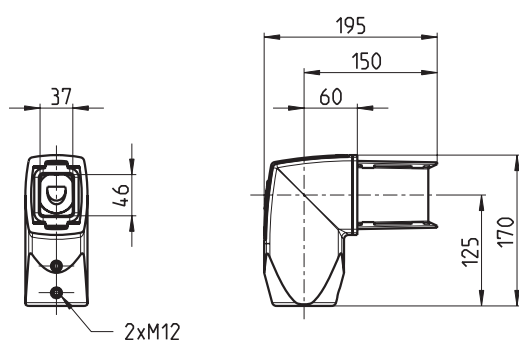
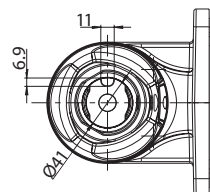
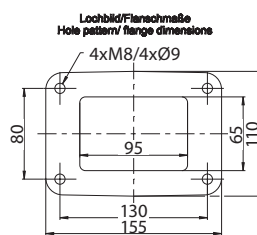
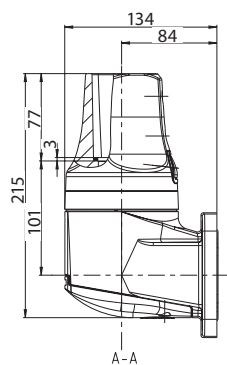
* Die-cast aluminium components standard in RAL 9006 (white-aluminium)

Connection from above or below
with coupling and reduction elbow

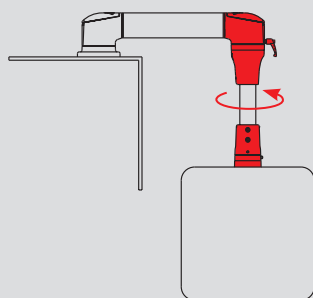
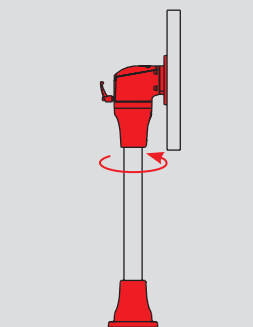
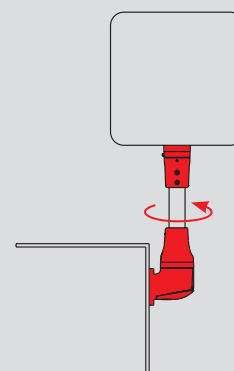


Connection from below/above
with coupling and base




Designation
Weight in kg

ST-Rohr 48x4x250	1,085
ST-Rohr 48x4x500	2,169
ST-Rohr 48x4x750	3,254
ST-Rohr 48x4x1000	4,338
ST-Rohr 48x4x1250	5,423
ST-Rohr 48x4x1500	6,507

**Machine connection
with rotatable elbow**

**Connection from below
with base and panel coupling S**

**Wall connection
with wall joint S**




**We make
safety happen.**



**We keep safe
your visions.**

700 0001 181 . 11.2019. Subject to alterations.

Contact

International Headquarters BERNSTEIN AG

Hans-Bernstein-Str. 1
D-32457 Porta Westfalica
Phone +49 571 793-0
Fax +49 571 793-555
info@de.bernstein.eu
www.bernstein.eu

Denmark

BERNSTEIN A/S
Phone +45 7020 0522
Fax +45 7020 0177
info@dk.bernstein.eu

France

BERNSTEIN S.A.R.L.
Phone +33 1 64 66 32 50
Fax +33 1 64 66 10 02
info@fr.bernstein.eu

Italy

BERNSTEIN S.r.l.
Phone +39 035 4549037
Fax +39 035 4549647
info@it.bernstein.eu

United Kingdom

BERNSTEIN Ltd
Phone +44 1922 744999
Fax +44 1922 457555
info@uk.bernstein.eu

Austria

BERNSTEIN GmbH
Phone +43 2256 62070-0
Fax +43 2256 62618
info@at.bernstein.eu

Switzerland

BERNSTEIN (Schweiz) AG
Phone +41 44 775 71-71
Fax +41 44 775 71-72
info@ch.bernstein.eu

Hungary

BERNSTEIN Kft.
Phone +36 1 4342295
Fax +36 1 4342299
info@hu.bernstein.eu

China

**BERNSTEIN Safe Solutions
(Taicang) Co., Ltd.**
Phone +86 512 81608180
Fax +86 512 81608181
info@bernstein-safesolutions.cn

www.bernstein.eu