

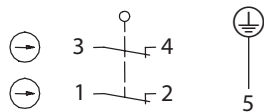
## Metal bodied limit switch

### Series M49

Description **M49-A2Z AH Z M12**

Article number **6023000088**

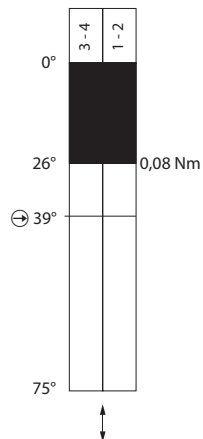
#### Operating symbol





#### Plug

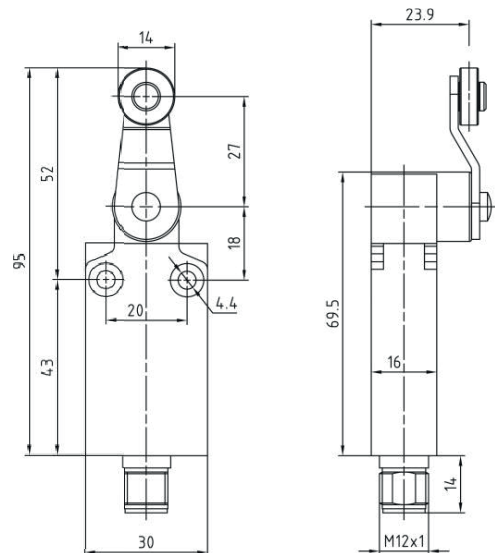
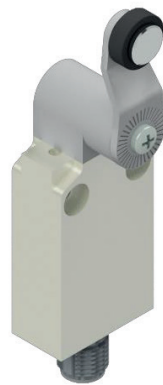


#### Operating diagram



 On
  Off

Tolerance:  
 Operating points  $\pm 1^\circ$ ;  
 Direct opening action  $\pm 1^\circ$ ;  
 Operating torque  $\pm 0,01 \text{ Nm}$



#### Electrical Data

Rated insulation voltage	$U_i$	250 V
Conv. thermal current	$I_{the}$	4 A
Rated operational voltage	$U_e$	240 V AC / 24 V DC
Utilization category		AC-15, 240 V / 3 A; DC-13, 24 V / 2 A
Direct opening action	$\rightarrow$	0,28 N acc. to IEC/EN 60947-5-1
Short-circuit protective device		Fuse 4 A gG
$U_e < 500 \text{ V a.c.} - \text{gG type fuses}$		
Protection class		I

Mechanical data	
Enclosure	Zn die-casting, powder coated, RAL 7001 (silver gray)
Actuator	Axle lever housing (Zn die-casting, galvanized), lever (steel, galvanized), roller (nylon)
Ambient air temperature	
-during operation	-25 °C ... +70 °C
-for storage	-40 °C ... +70 °C
Contact type	Slow action, 2 N.C. (Form Zb)
Mechanical life	10 x 10 <sup>6</sup> switching cycles
Switching frequency	3600 / h
Velocity for actuating	0,5 m/s
Resistance between contacts	< 25 mΩ
Connection	1 x plug M12x1 ; 5-pole, male
Weight	0,155 kg
Installation position	All positions are authorized
Protection type	IP67 acc. to IEC/EN 60529

ID for safety engineering	
B10d	20 x 10 <sup>6</sup>

Standards	
	DIN EN 60947-5-1

EU Conformity	
	acc. to directive 2014/35/EU (Low-Voltage-Directive)

Approvals	
	cUL <sub>US</sub> (B300, R300)

Notes	
	Type 4 -X – 6 enclosure ("outdoor use - raintight - watertight corrosion resistant") acc. to UL50