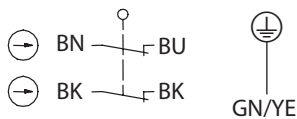


## Metal bodied limit switch Series M49

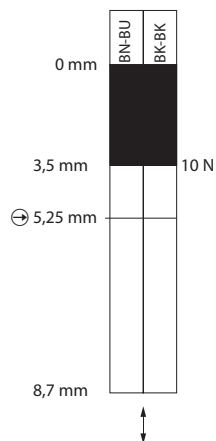
Description **M49-A2Z RIWF**



Article number **6023000059**

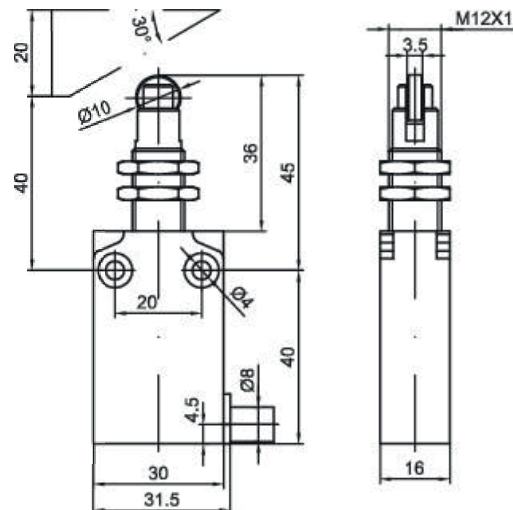
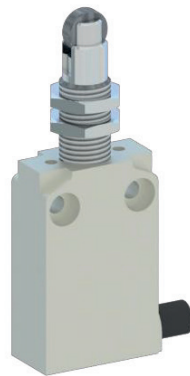
### Operating symbol



### Operating diagram



 On
  Off
 Tolerance:  
 Operating points  $\pm 0,2$  mm;  
 Direct opening action  $\pm 0,2$  mm;  
 Operating force  $\pm 0,2$  N



### Electrical Data

|   |   |
|---|---|
| Rated insulation voltage  | $U_i$ 250 V                                 |
| Conv. thermal current   | $I_{the}$ 4 A                               |
| Rated operational voltage   | $U_e$ 240 V AC / 24 V DC                    |
| Utilization category  | AC-15, 240 V / 3 A;<br>DC-13, 24 V / 2 A    |
| Direct opening action   | $\rightarrow$ 30 N acc. to IEC/EN 60947-5-1 |
| Short-circuit protective device<br>$U_e < 500$ V a.c. - gG type fuses | Fuse 4 A gG                                 |
| Protection class  | I   |

| <b>Mechanical data</b>      |   |
|-----------------------------|---|
| Enclosure                   | Zn die-casting, powder coated, RAL 7001 (silver gray)                     |
| Actuator                    | Plunger (nickel plated brass), roller (galvanized steel) with fixing nuts |
| Ambient air temperature     |   |
| -during operation           | -25 °C ... +70 °C   |
| -for storage                | -40 °C ... +70 °C   |
| Contact type                | Slow action, 2 N.C. (Form Zb)   |
| Mechanical life             | 10 x 10 <sup>6</sup> switching cycles                                     |
| Switching frequency         | 3600 / h  |
| Velocity for actuating      | 0,5 m/s   |
| Resistance between contacts | < 25 mΩ   |
| Connection                  | PVC 5 x AWG 18 UL cable, 1m length  |
| Weight                      | 0,195 kg  |
| Installation position       | All positions are authorized  |
| Protection type             | IP67 acc. to IEC/EN 60529   |

| <b>ID for safety engineering</b> |                      |
|----------------------------------|----------------------|
| B10d                             | 20 x 10 <sup>6</sup> |

| <b>Standards</b> |                  |
|------------------|------------------|
|                  | DIN EN 60947-5-1 |

| <b>EU Conformity</b> |  |
|----------------------|--|
|                      | acc. to directive 2014/35/EU (Low-Voltage-Directive) |

| <b>Approvals</b> |                                |
|------------------|--------------------------------|
|                  | cUL <sub>US</sub> (B300, R300) |

| <b>Notes</b> |  |
|--------------|--|
|              | Type 4 -X – 6 enclosure ("indoor use only") acc. to UL50 |