

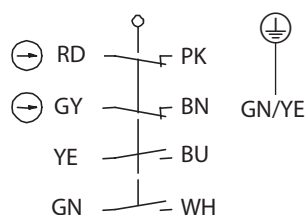
Metal bodied limit switch

Series M49

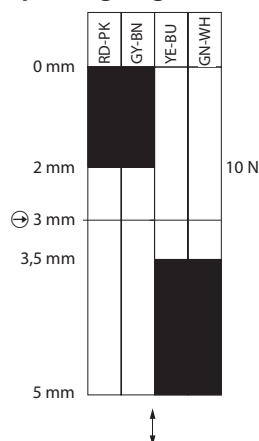
Description **M49-U2Z IWF**



Article number **6023000045**

Operating symbol

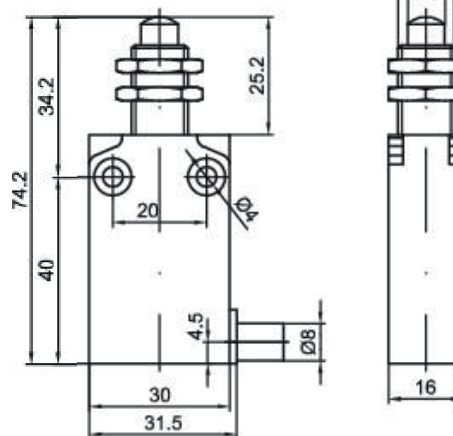
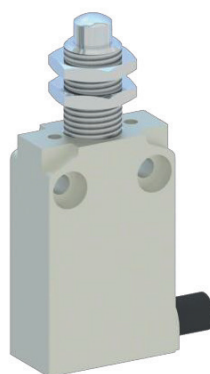


Operating diagram



 On
  Off

Tolerance:
 Operating points $\pm 0,2$ mm;
 Direct opening action $\pm 0,2$ mm;
 Operating force $\pm 0,2$ N



Electrical Data

| | |
|------------------------------------|---|
| Rated insulation voltage | U_i 250 V |
| Conv. thermal current | I_{the} 4 A |
| Rated operational voltage | U_e 240 V AC / 24 V DC |
| Utilization category | AC-15, 240 V / 3 A; DC-13, 24 V / 2 A |
| Direct opening action | \rightarrow 30 N acc. to IEC/EN 60947-5-1 |
| Short-circuit protective device | Fuse 4 A gG |
| $U_e < 500$ V a.c. - gG type fuses | |
| Protection class | I |

| Mechanical data | |
|-----------------------------|---|
| Enclosure | Zn die-casting, powder coated, RAL 7001 (silver gray) |
| Actuator | Plunger (nickel plated brass) with fixing nuts |
| Ambient air temperature | |
| -during operation | -25 °C ... +70 °C |
| -for storage | -40 °C ... +70 °C |
| Contact type | Slow action, 2 N.C. (Form Zb), 2 N.O. |
| Mechanical life | 10 x 10 ⁶ switching cycles |
| Switching frequency | 3600 / h |
| Velocity for actuating | 0,5 m/s |
| Resistance between contacts | < 25 mΩ |
| Connection | PVC 9 x AWG 22 UL cable, 1m length |
| Weight | 0,190 kg |
| Installation position | All positions are authorized |
| Protection type | IP67 acc. to IEC/EN 60529 |

| ID for safety engineering | |
|---------------------------|----------------------|
| B10d | 20 x 10 ⁶ |

| Standards | |
|-----------|------------------|
| | DIN EN 60947-5-1 |

| EU Conformity | |
|---------------|--|
| | acc. to directive 2014/35/EU (Low-Voltage-Directive) |

| Approvals | |
|-----------|--------------------------------|
| | cUL _{US} (B300, R300) |

| Notes | |
|-------|--|
| | Type 4 -X – 6 enclosure ("indoor use only") acc. to UL50 |