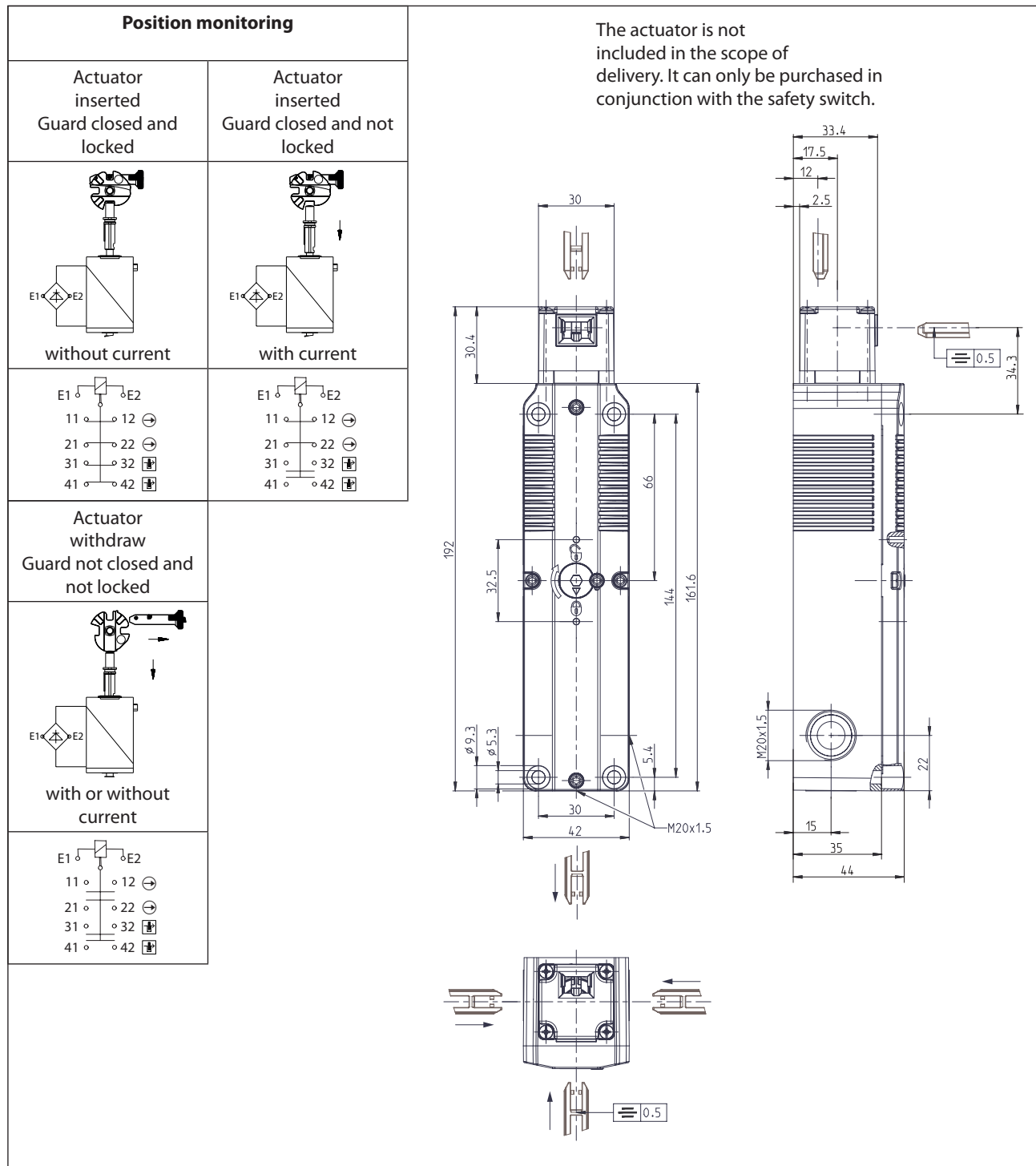


Safety switch Series SLC

Description **SLC-F-024-20/20-R4**

Article number **6018200007**



Electrical data		
Protection class	II, totally insulated	
Contact elements		
Rated insulation voltage	U _i	250 V
Rated impulse withstand voltage	U _{imp}	2,5 kV
Rated operational voltage	U _e	240 V AC / 24 V AC/DC
Conv. thermal current	I _{the}	5 A
Utilization category acc. to IEC	AC-15, U _e / I _e 240 V / 1,5 A DC-13, U _e / I _e 24 V / 1,5 A; 250 V / 0,11 A	
Utilization category acc. to UL / CSA	B300 R300 (same polarity)	
Direct opening action	⊙	according to IEC/EN 60947-5-1, Annex K
Short-circuit protective device	4 A gG	
Rated conditional short-circuit current	400 A	
Electro magnet		
Duty cycle	100 % ED (at E1; E2)	
Temperature class	F (155 °C)	
Permanent power consumption	6,7 VA (W)	
Switch operations permanent	10 / min	
Operating voltage	24 V AC / DC (+10 % /-15 %)	

Mechanical data		
Enclosure	Thermoplastic, glass fibre reinforced (UL 94-V0)	
Cover	Thermoplastic, glass fibre reinforced (UL 94-V0)	
Actuating head	Thermoplastic, glass fibre reinforced / Zn-GD	
Actuator	Separate actuator	
Minimum actuating radius	R_{min}	see separate actuators data sheet
Velocity for actuating	V_{max}	0,5 m/s
Extraction force	≤ 10 N	
Interlocking principle	Spring force	
Unlocking	a) magnetic force b) auxiliary release from front and back side	
Holding force	F_{Zh}	1500 N (EN ISO 14119)
Ambient air temperature	-25 °C to +55 °C	
Contact type	Interlock: 2 NC Guard lock: 2 NC	
Switching principle	4 slow make and break contact elements	
Mechanical life	1×10^6 switching cycles	
Assembly	4 x M5	
Connection	Screw connection	
Conductor cross-sections	0,34 ... 1,5 mm ² flexible	
Cable entrance	3 x M20 x 1,5	
Weight	$\approx 0,484$ kg	
Installation position	operator definable	
Protection type	IP67 acc. to IEC/EN 60529 ; (UL 50 E / CSA C22.2) Type 6 indoor use only	

ID for safety engineering	
B10d	2×10^6 Cycles (at DC-13; 24 V; 0,1 A)

Standards	
	DIN EN 60947-5-1
	UL 508 18th Edition, CSA-C22.2 No.14-18
	GS-ET-19 (DGVU)
	DIN EN ISO 14119
	DIN EN ISO 13849-1

EU Conformity	
	acc. to directive 2006/42/EC (Safety-of-Machinery-Directive)

Approvals	
DGVU	(in preparation)
cCSA _{US}	
CCC	

Notes
<p>The degree of protection (IP code) specified applies solely to a property closed cover and the use of an equivalent cable gland with adequate cable.</p> <p>The switch may not be used as a mechanical stop.</p> <p>In the event of a power failure, the guard remains locked.</p>